









An attractive semi detached home, situated within this highly sought after area of High Barnes. Internally the neatly presented accommodation is accessed via a reception hall, lounge, dining room and fitted kitchen. On the first floor there are three bedrooms, shower room and separate WC. Externally there is a driveway to the front leading to attached garage with lawned gardens to the front and side, and low maintenance gravelled garden to the rear. Benefits of the property include double glazing and gas central heating. This location is ideal for shops and schools as well as providing easy access to Sunderland City Centre, Doxford International Park, Sunderland Royal Hospital and major road connections including the A19. Available with no upward chain, early viewing is highly recommended to avoid disappointment!

# MAIN ROOMS AND DIMENSIONS

## Ground Floor

Access via UPVC entrance door.

### Reception Hall



Stairs to first floor with storage under and radiator.

### Lounge 13'5" x 10'10"



Double glazed bay window to the front, radiator, feature fireplace and double doors opening into the dining room.

### Dining Room 12'2" x 10'2"



Double glazed window to the rear and a gas fire.

### Kitchen 9'1" x 11'3"



Range of wall and base units with countertops over incorporating 1 1/2 bowl sink and drainer unit with mixer tap. Space for an oven, washing machine and fridge freezer. Radiator, two double glazed windows and UPVC door to rear garden.

### First Floor Landing



Double glazed window to the side elevation, storage cupboard and access point to loft.

### Bedroom 1 10'9" x 11'2"



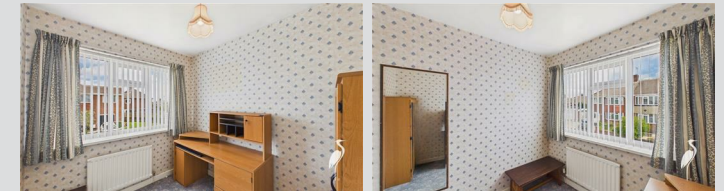
Double glazed bay window to the front, radiator and built in wardrobes.

### Bedroom 2 12'9" x 10'1"



Double glazed window to the rear, radiator and storage cupboard.

### Bedroom 3 7'5" x 7'11"



Double glazed window to the front and radiator.

### Shower Room



Walk in shower, wash hand basin set into vanity unit, radiator, and double glazed window to the rear.

Visit [www.peterheron.co.uk](http://www.peterheron.co.uk) or call 0191 510 3323

Tried. Trusted. Recommended. City Branch 20 Fawcett Street Sunderland SR1 1RH Fulwell Branch 15 Sea Road Fulwell Sunderland SR6 9BS

# MAIN ROOMS AND DIMENSIONS

## Separate WC



Low level WC, radiator and double glazed window to the side elevation.

## Outside



Gardens to the front and side mainly laid to lawn with mature borders, driveway providing off street parking leading to garage whilst to the rear there is low maintenance garden.

## Garage 9'0" x 17'8"

Double glazed window and wooden door to garden, accessed via an up and over door.

## Tenure Freehold

We have been advised by our clients there are 927 year remaining on the lease, however our clients are in the process of buying the Freehold. Any prospective purchaser should clarify this with their Solicitor.

## Council TaxBand

The Council Tax is Band C.

## Important Notice

Peter Heron Ltd for themselves and for the vendors of this property whose agents they are, give notice that:- The particulars are set out for general guidance only for the intending Purchasers and do not constitute part of an offer or contract. Whilst we endeavour to make our sales particulars accurate and reliable, if there is anything of particular importance which you feel may influence your decision to purchase, please contact the office and we will be pleased to check the information. Do so particularly, if contemplating travelling some distance to view the property. All descriptions, dimensions, references to conditions and necessary permissions for use and occupation and other details are given in good faith, and are believed to be correct, however any intending purchasers should not rely on them that statements are representations of fact, but must satisfy themselves by inspection or otherwise as to the correctness of each of them. Independent property size verification is recommended.

Lease details, service charges and ground rent (where applicable) are given as a guide only and should be checked and confirmed by your Solicitor prior to exchange of contracts. No person in the employment of Peter Heron Ltd has any authority to make or give any representation or warranty whatever in relation to this property or these particulars, nor to enter into any contract on behalf of Peter Heron Ltd, nor into any contract on behalf of the Vendor. The copyright of all details and photographs remain exclusive to Peter Heron Ltd.

Please note that in the event the purchaser uses the services of Peter Heron Conveyancing in the purchase of their home, Peter Heron Ltd will be paid a completion commission of £300.00 by Movewithus Ltd.

## Viewings Fst

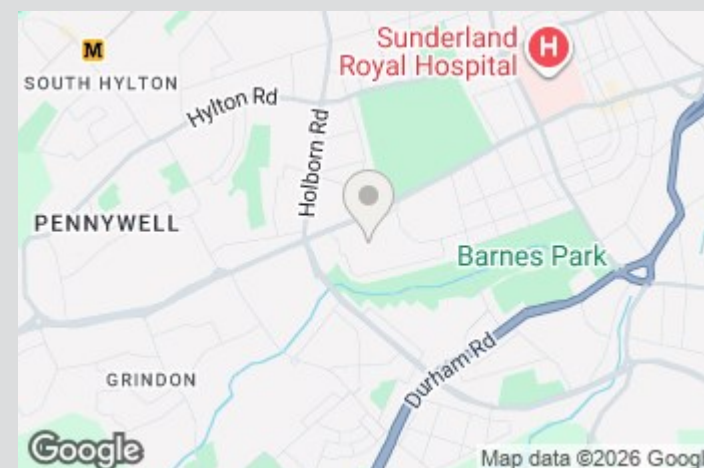
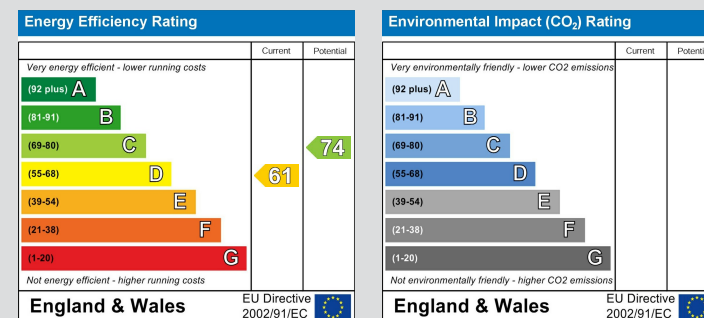
To arrange an appointment to view this property contact our Fawcett Street branch on 0191 5103323.

## Opening Times

Monday - Friday 9.00am to 5.00pm  
Saturday 9.00am to 12noon

## Ombudsman

Peter Heron Estate Agents are members of The Property Ombudsman and subscribe to The Property Ombudsman Code of Practice.

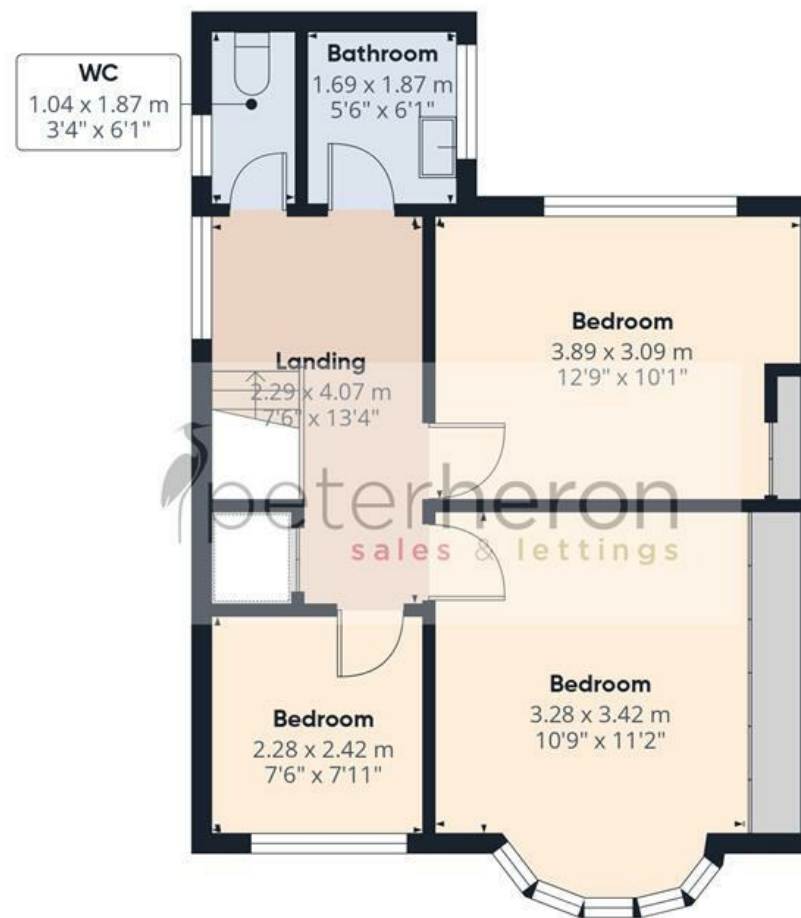


Visit [www.peterheron.co.uk](http://www.peterheron.co.uk) or call 0191 510 3323

Tried. Trusted. Recommended. City Branch 20 Fawcett Street Sunderland SR1 1RH Fulwell Branch 15 Sea Road Fulwell Sunderland SR6 9BS



Ground Floor



First Floor

Approximate total area<sup>(1)</sup>

103.3 m<sup>2</sup>

1110 ft<sup>2</sup>

(1) Excluding balconies and terraces

Calculations reference the RICS IPMS 3C standard. Measurements are approximate and not to scale. This floor plan is intended for illustration only.

GIRAFFE360

